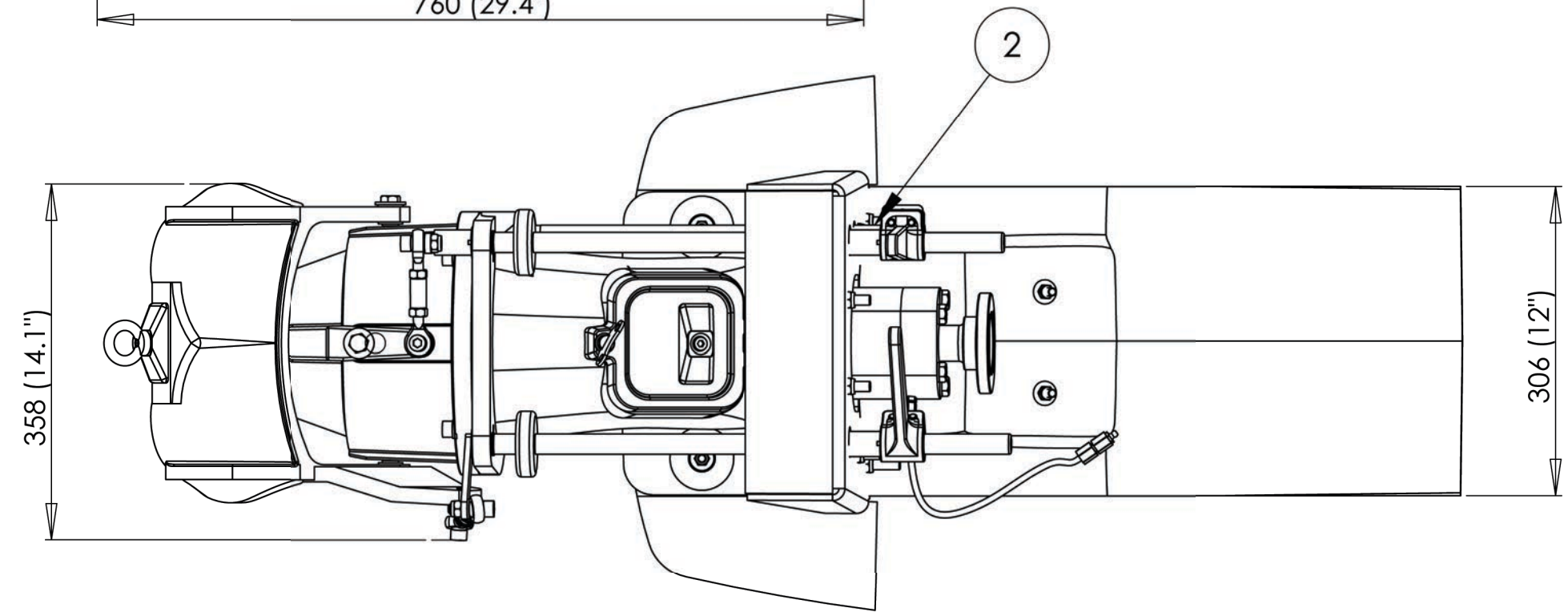
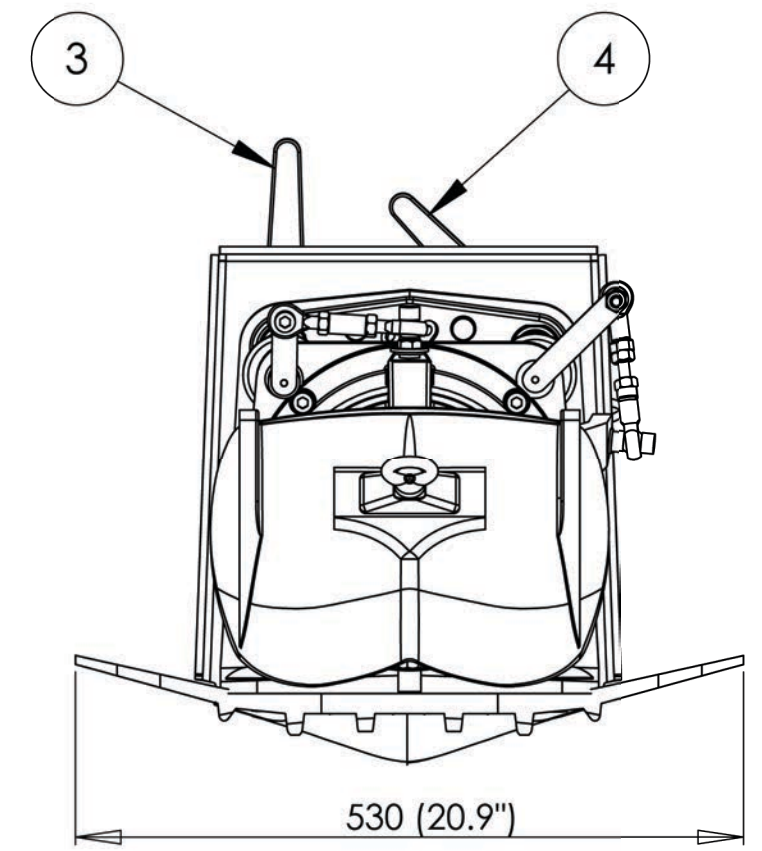
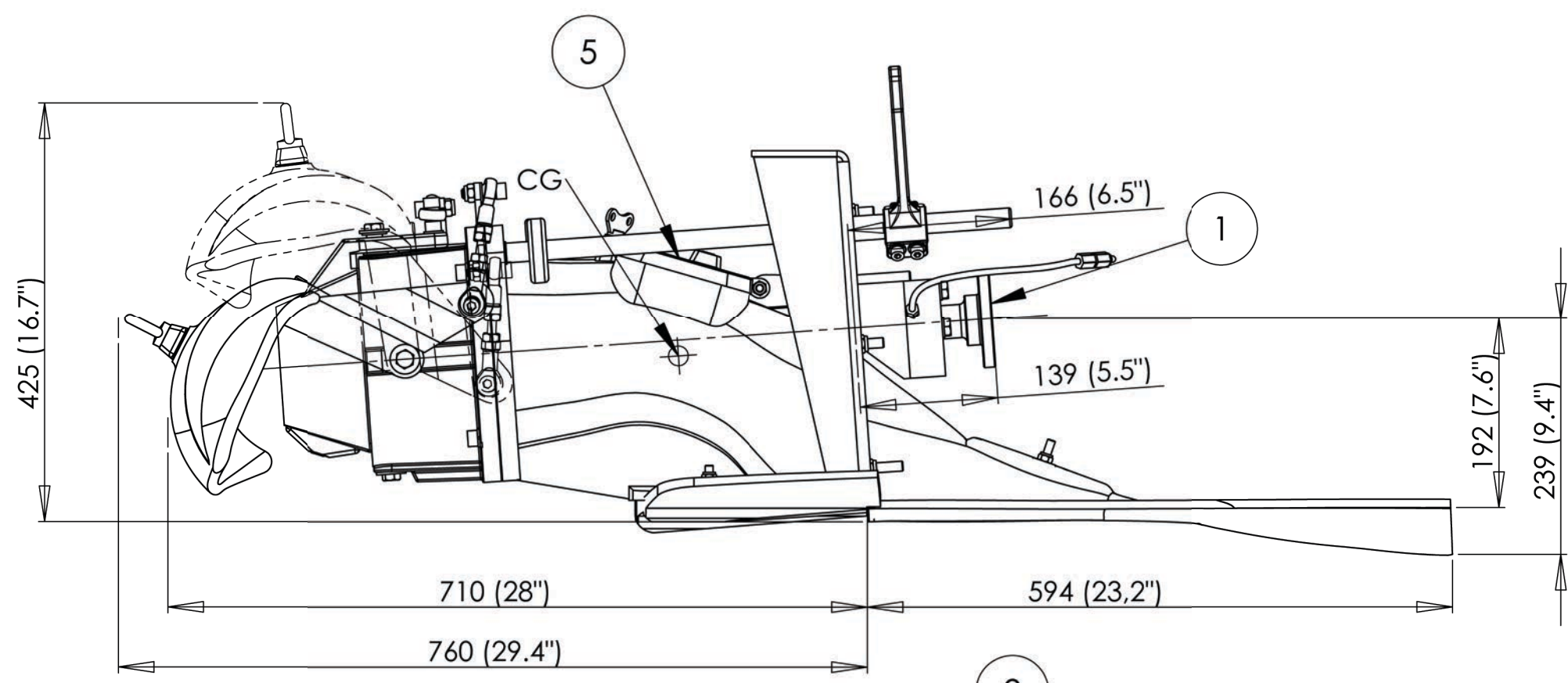


THE INFORMATION CONTAINED HEREIN IS CONFIDENTIAL AND PROPRIETARY TO ALAMARIN-JET OY AND IS NOT TO BE REPRODUCED, MODIFIED OR USED WITHOUT PRIOR PERMISSION OF ALAMARIN-JET OY OR ITS DULY AUTHORIZED REPRESENTATIVE. ALL RIGHTS RESERVED.



Technical data

Max. power	110kW/150hp
Max . rpm	5000 1/s
Vessel displacement	1,7t (single jet, planing)
Impeller diameter	192mm (7.6")
Unit weight	48kg (106lbs)

1. Drive flange, several options.
2. 3/4" BSP raw water intake.
3. Steering lever.
4. Reverse deflector control lever.
5. Inspection hatch.

Työtapakohtaiset toleranssit: lästtuava työstö SFS4011 (ISO2768) keskisarja, hitsatut rakenteet SFS3393 pituusmitat ja kulmat luokka B, muoto ja sijaintitoleranssit DIN8570BL3 luokka E, valukappaleet SFS-ISO8062	Pintakäs. menetelmä - Surf. treatm.	Pinta-ala - Surf. area [m²]	Paino - Weight [kg]	Suun. Design.	
	Sävy - Colour			Piirt. Draw.	HRa 30.10.2008
			ISO	Hyväk. Appr.	MAI 30.10.2008
			Tuotekoodi		Ver. - Rev.
			AJ 180		B
		Koko Size A3	Mitta kaava Scale 1:6	Sivu Sheet 1/3	