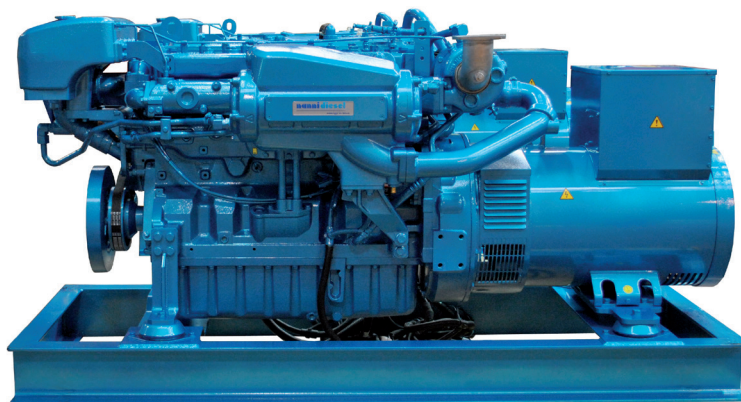


QLS102T

SPECIFICATIONS



Frequency	50 Hz	Engine base	John Deere, mechanical engine
Voltage	400 V	Cooling system	Seawater pump with rubber impeller
Amperes	82.9 A continuous 118.4 A prime	Closed cooling	Heat exchanger
Power according to iso 8528	57.4 kW continuous 82 kW prime	Cylinders	6 in line
Protection	IP23	Start (cold temperature)	Glow plugs
Insulation	Class H	Fuel consumption at full load	23.9l/h
Voltage accuracy	± 0.5%	Sea water pump connexion	50 mm
Electromagnetic compatibility	EMC 2014/30/EU	Fuel pump - Max suction height	std pump : 0.5 m with add. pump : 1.8 m
Lenght	1798 mm	Engine operating angle	15° continuous 30° intermittent
Width	809 mm	Fuel connexion	10 mm
Height	1045 mm	Class approval	Bureau Veritas
Dry weight	1280 kg		

QLS102T

82 kW prime @1500 rpm

TECHNICAL DESCRIPTION

ENGINE BASE

- 4 stroke Diesel engine tested in all marine or industrial applications throughout the world.
- Replaceable wet-type cylinder liners giving an excellent heat dissipation for long life.

INJECTION AND COMBUSTION SYSTEM

- Proven and reliable Mechanical Governor
- High torque
- Mechanical injection

COOLING SYSTEM

- Cooling is ensured by heat exchange between coolant and seawater in an heat exchanger, or via a Keel Cooling system.
- Reduced external connections eliminates hoses and fittings that can leak or break.
- Cooler and quieter environment for vessel and crew.
- Seawater pump with rubber impeller.

GENERATOR

- 50 Hz : delivering a continuous power of 57.4 kW and able to provide up to 82 kW
- IP23 protection

STANDARD EQUIPMENT

- Closed cooling with heat exchanger
- Water-cooled manifold
- Baseframe
- Flexible mountings (dampers)
- Oil drain pump mounted on the engine
- Luxe GE panel

OPTIONAL EQUIPMENT

- Seawater hoses
- Seawater filter
- Siphon breaker
- 24V Two-pole electrical system
- Dual shield fuel feed system piping
- Leakproof injection piping
- Exhaust system
- Fuel prefilter
- Keel Cooling version
- Wet or dry exhaust
- Engine heater
- Exhaust compensator
- Heating elements in generator
- Generator prepared parallel installation
- Double fuel lines
- BV type approval

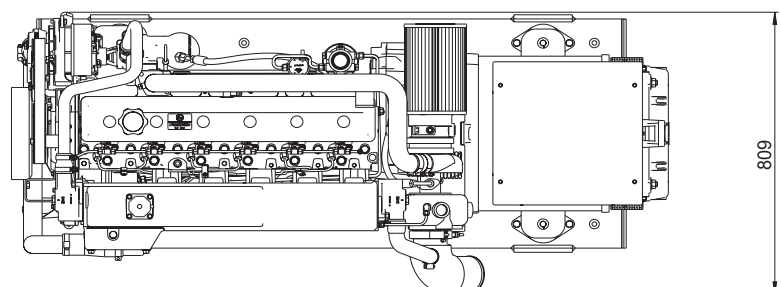
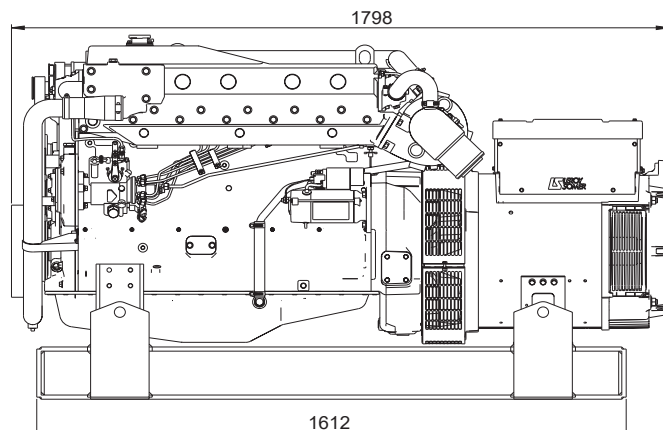
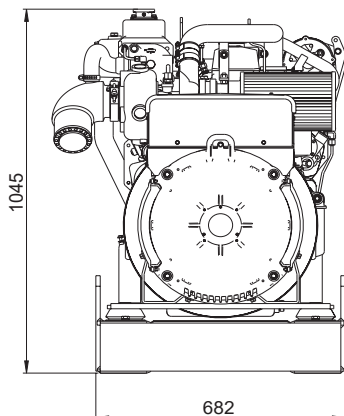
INSTRUMENT PANEL

LUXE GE



- Start and stop buttons
- Low oil pressure warning light
- Coolant temperature warning light
- Preheat warning light
- Battery charge warning light
- Oil pressure indicator
- Coolant temperature indicator

DIMENSIONS (mm)



NANNI INDUSTRIES S.A.S.

11, Avenue Mariotte - Zone Industrielle
33260 La Teste - France
Tel: +33 (0)5 56 22 30 60
Fax: +33 (0)5 56 22 30 79

Technical data according to ISO 8528. This document is not contractual. Nanni reserves the right to modify any of the characteristics stated in this document without notice, in a constant effort to improve the quality of its products. Images and illustrations may show non standard equipments. All combination of equipment & accessory are not available.

DGBXXC01169A