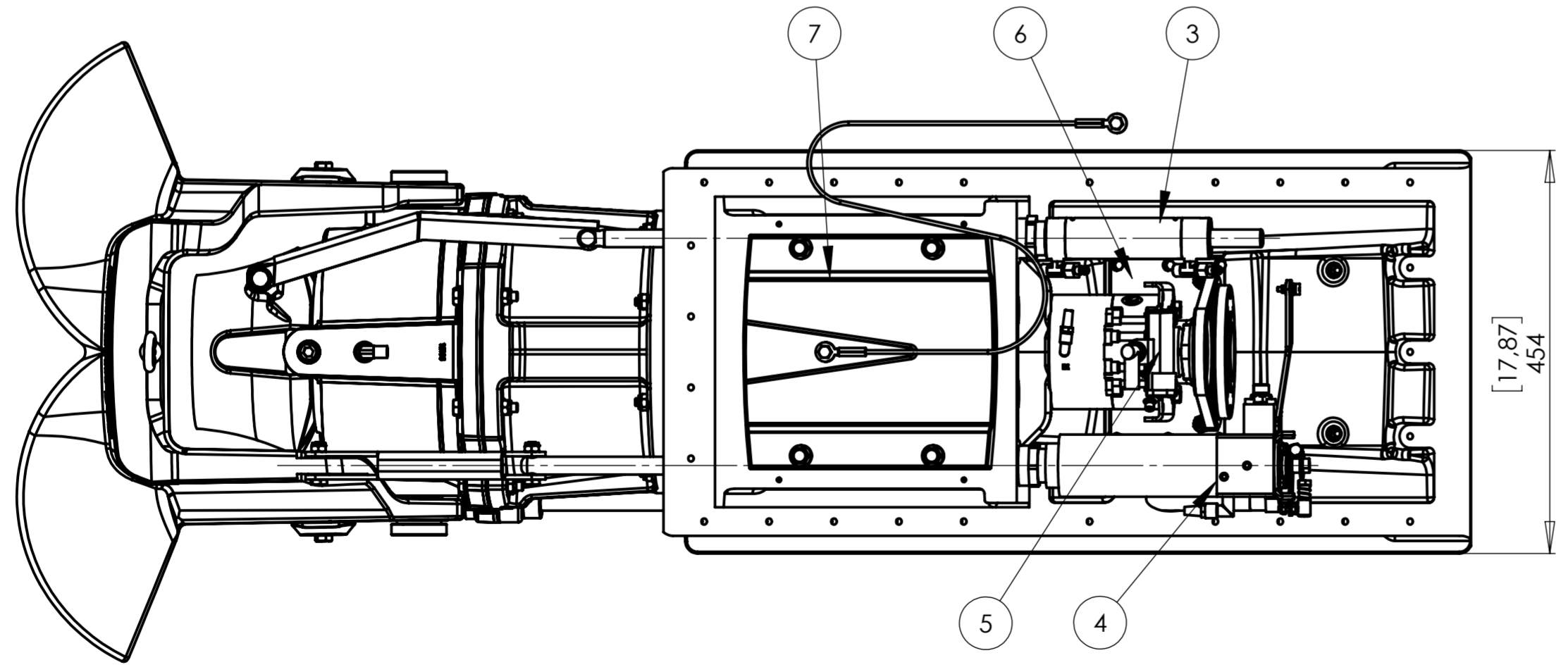
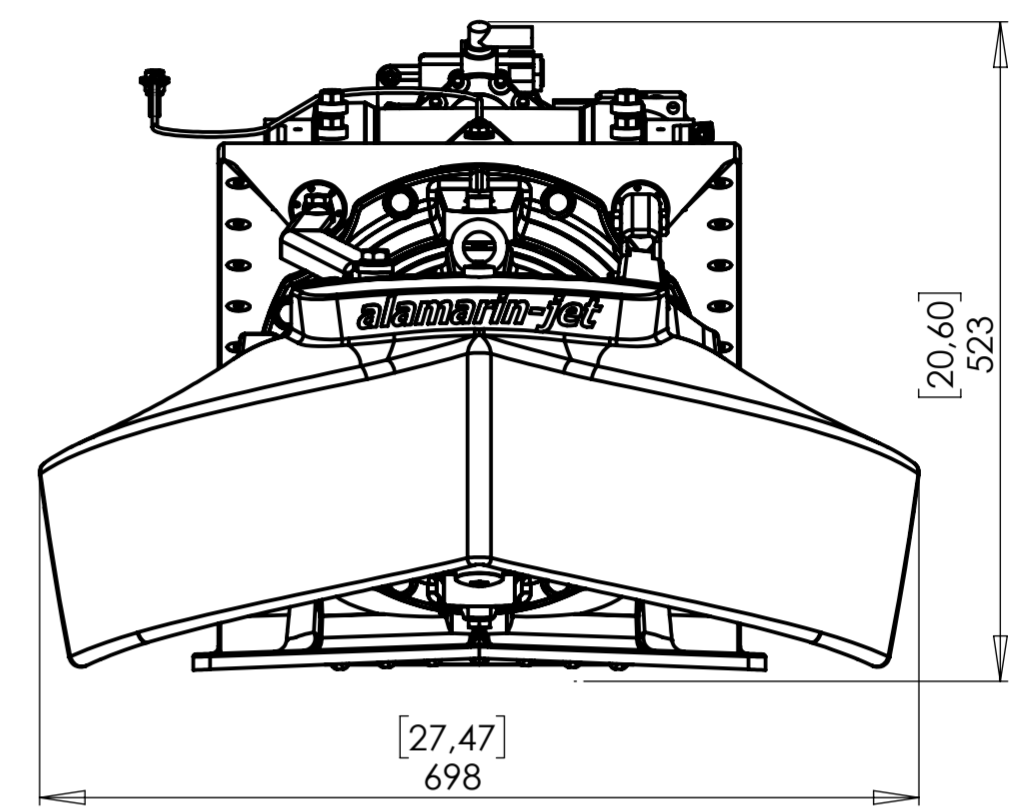
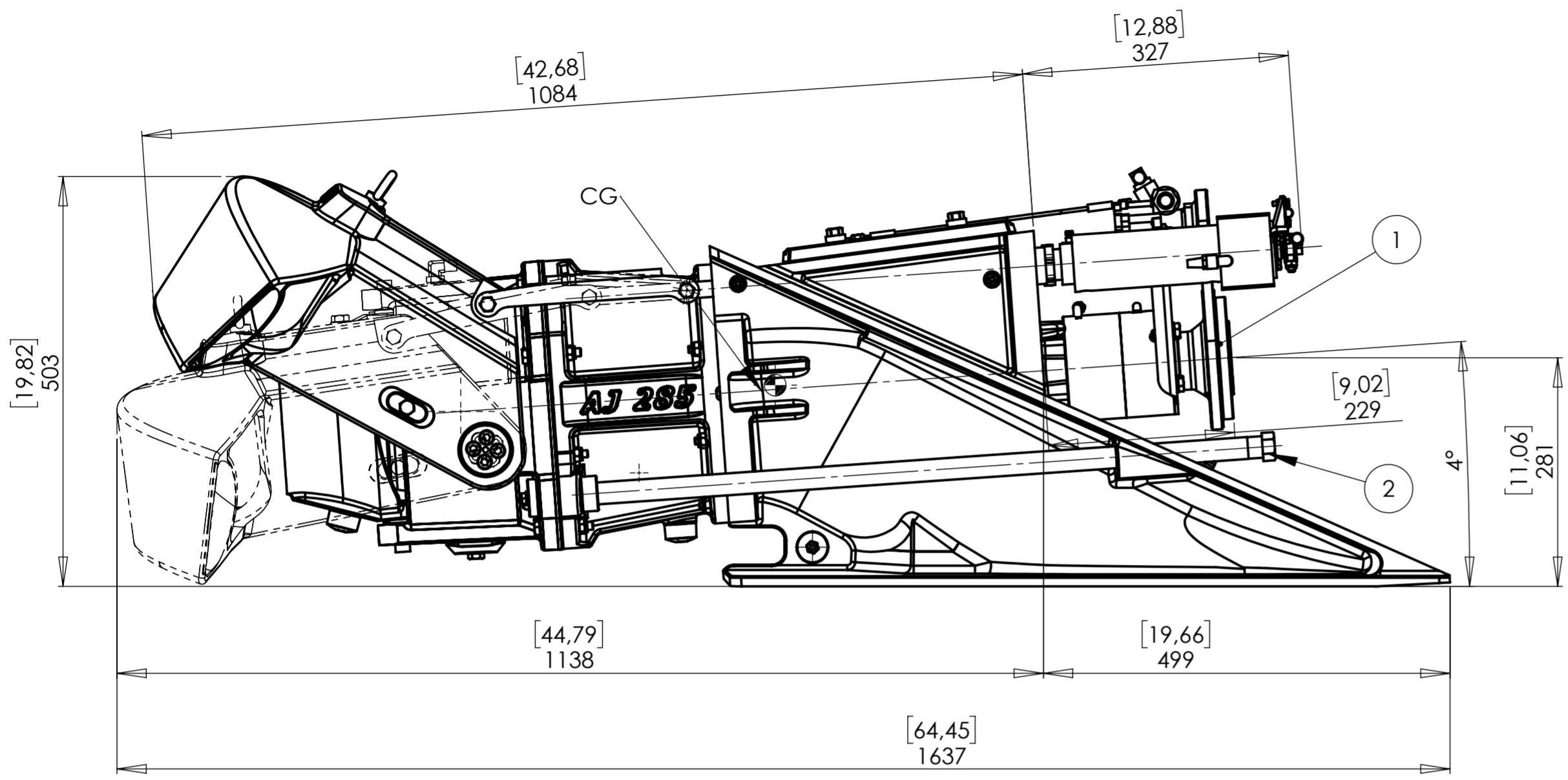


THE INFORMATION CONTAINED HEREIN IS UNCLASSIFIED EXCEPT WHERE SHOWN OTHERWISE. IT IS THE PROPERTY OF ALAMARIN-JET AND IS NOT TO BE REPRODUCED, COPIED, OR TRANSMITTED IN ANY FORM OR BY ANY MEANS, ELECTRONIC OR MECHANICAL, INCLUDING PHOTOCOPYING, RECORDING, OR BY ANY INFORMATION STORAGE AND RETRIEVAL SYSTEM, WITHOUT PERMISSION IN WRITING FROM ALAMARIN-JET. ALL RIGHTS RESERVED.



1. DIN-150 drive flange.
2. 3/4" BSP raw water intake.
3. Integrated hydraulic steering cylinder, compatible with common helm pumps.
4. Integrated hydraulic cylinder for reverse deflector control. 33C cable connection.
5. Integrated hydraulic pump unit for reverse deflector cylinder.
6. Integrated oil cooler for reverse deflector hydraulic system.
7. Inspection hatch.

Technical data

Max. power	368kW/500hp
Max. rpm	3700 1/s
Vessel displacement	5t (single jet, planing)
Impeller diameter	288mm [11.3"]
Unit weight	154kg [340lbs]
Entrained water*	29L [7.7gal]

\*Volume inside the unit within the boat hull (loss of buoyancy)

Dimensions [imperial]  
metric

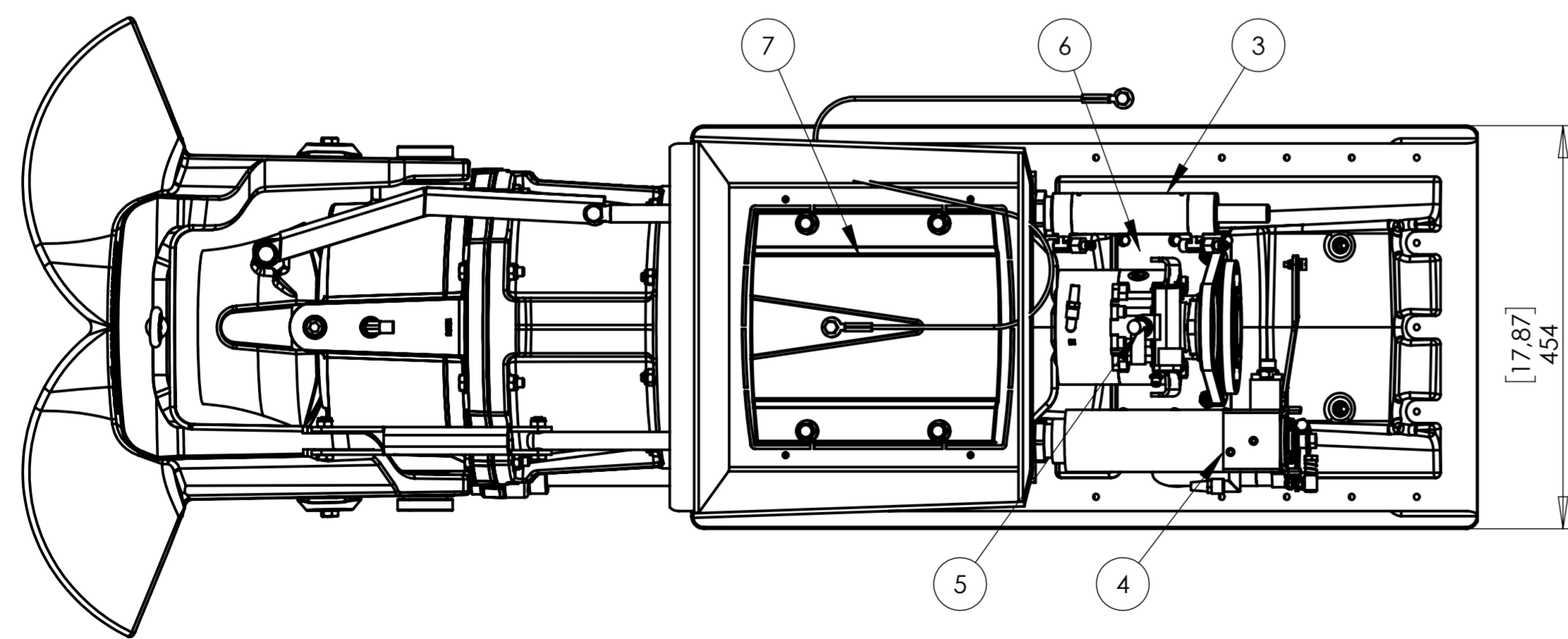
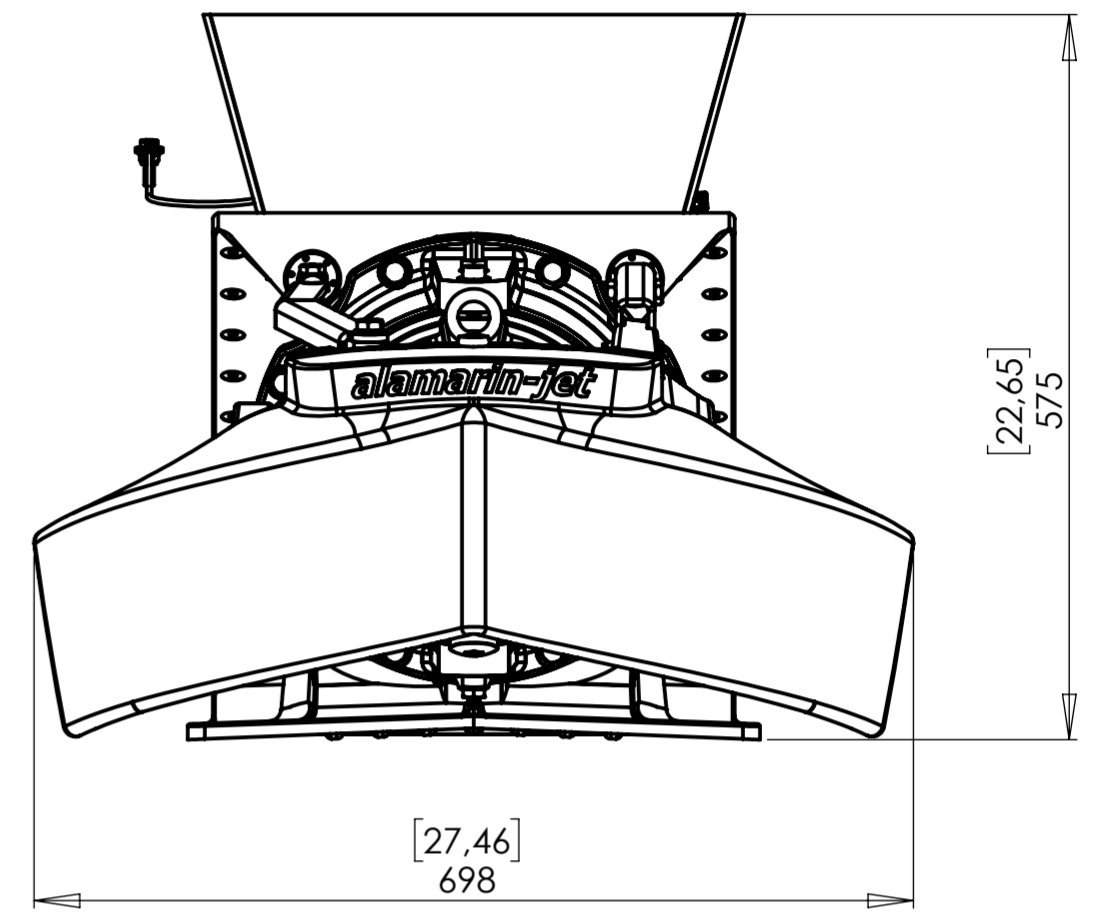
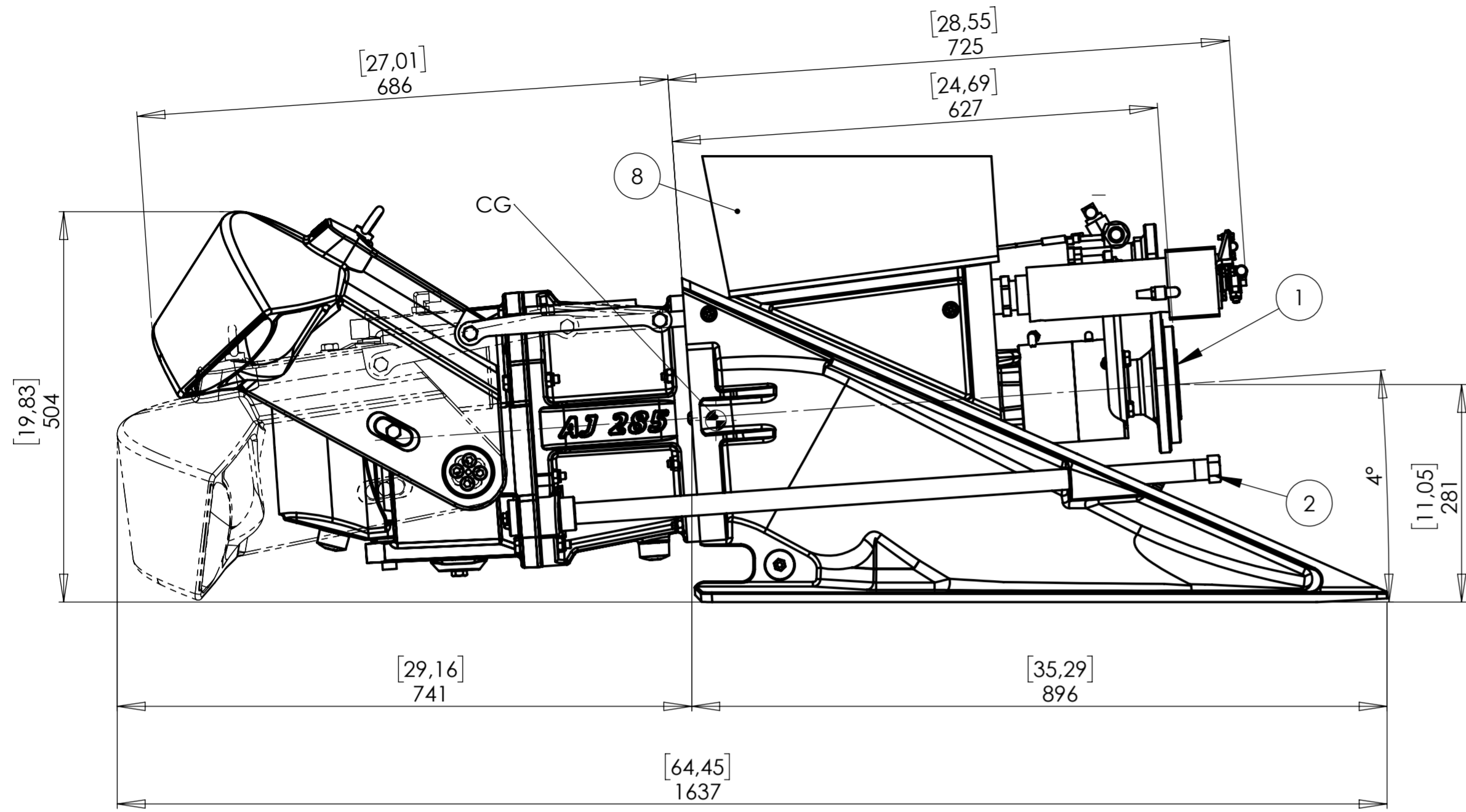
Muutos / Change  
Staattori ja kauha päivitetty uusiin malleihin

Suunnittelija / Designed  
PM 15.07.2020

Hyväksyjä / Approved by  
PM 15.07.2020

Work Tolerances: Machining SFS4011 (ISO2768) middle Welded structures SFS3393-B length and angles Form and orientation tolerances DIN8570BL3 - E castings SFS-ISO8062	Surface treatment	Surface area (m <sup>2</sup> )	Mass (kg)	Designer	12.03.2015
	Colour		154	HRa	
	Long tail		Product code	Version	
			AJ 285	B	
	Size	Scale	Page		
A2	1:6	1/3			

THE INFORMATION CONTAINED HEREIN IS CONFIDENTIAL AND PROPRIETARY TO ALAMARIN-JET. IT IS NOT TO BE REPRODUCED, COPIED, OR TRANSMITTED IN ANY FORM OR BY ANY MEANS, ELECTRONIC OR MECHANICAL, INCLUDING PHOTOCOPYING, RECORDING, OR BY ANY INFORMATION STORAGE AND RETRIEVAL SYSTEM, WITHOUT THE WRITTEN PERMISSION OF ALAMARIN-JET OR ITS DULY AUTHORIZED REPRESENTATIVE. ALL RIGHTS RESERVED.



1. DIN-150 drive flange.
2. 3/4" BSP raw water intake.
3. Integrated hydraulic steering cylinder, compatible with common helm pumps.
4. Integrated hydraulic cylinder for reverse deflector control, 33C cable connection.
5. Integrated hydraulic pump unit for reverse deflector cylinder.
6. Integrated oil cooler for reverse deflector hydraulic system.
7. Inspection hatch.
8. Inspection hatch extension. Height depends on waterline level.

Technical data

Max. power	368kW/500hp
Max. rpm	3700 1/s
Vessel displacement	5t (single jet, planing)
Impeller diameter	288mm [11.3"]
Unit weight	159kg [351lbs]
Entrained water*	39L [10.3gal]

\*Volume inside the unit within the boat hull (loss of buoyancy)

Dimensions [imperial]  
metric

Muutos / Change  
Staattori ja kauha päivitetty uusiin malleihin

Suunnittelija / Designed  
PM 15.07.2020

Hyväksyjä / Approved by  
PM 15.07.2020

Work Tolerances: Machining SFS4011 (ISO2768) middle Welded structures SFS3393-B length and angles Form and orientation tolerances DIN8570BL3 - E castings SFS-ISO8062	Surface treatment	Surface area [m <sup>2</sup> ]	Mass [kg] 159	Designer HRa	12.03.2015
	Colour		ISO Product code <b>AJ 285</b> Size A2 Scale 1:6 Page 2/3	Approved	Version B
		Short tail			